



New Silicone Line Post Insulator **For 69 kV Overhead Lines**

K-LINE INSULATORS LIMITED (KLI) has introduced a new silicone line post insulator that is applicable for 69 kV overhead lines. This insulator is designed for installations with high electrical requirements. This insulator features the highly reliable proprietary **KLI** silicone rubber that is one piece, injection molded and chemically bonded to a high quality epoxy fiberglass rod.

This insulator will greatly improve the electrical performance of the System, especially in contaminated environments. Insulator contamination is a common problem on overhead lines. The fundamental element for interruptions with contaminated insulators is moisture. Wet atmospheric conditions result in water filming on surfaces and causing leakage currents to develop. On wood structures, leakage currents can cause pole top fires and eventual failures. On steel structures, leakage currents can develop into faults. **KLI's** proprietary silicone rubber offers the ultimate solution in post insulator applications. Because of its hydrophobicity, this material inherently resists water filming thereby limiting leakage currents. These silicone rubber insulators reduce leakage currents, even when contaminated and require less frequent if any washing. The savings in maintenance costs are added benefits of using **KLI** silicone rubber insulators.

The 69 kV line post insulator has been designed to meet the requirements of CSA C411.6, ANSI C29.18, and IEC 61952. The 69 kV line post insulator is available in four different configurations: Horizontal, Vertical, Tie-Top, or K-Clamp. The K-CLAMP™ design offers the best and most cost effective solution in most cases.

69 kV K-CLAMP™ Line Post

The K-CLAMP™ Line Post insulator has an integral clamp for attaching the conductor directly to the line post insulator without the use of a separate conductor clamp. The K-CLAMP™ can be mounted either in the vertical or horizontal position and offers several advantages over conventional line post insulators.

The K-CLAMP™ has a smooth clamping zone that accommodates a conductor diameter range of 0.20 inch (5.1 mm) to 1.34 inch (34 mm). The single galvanized steel clamp bolt that secures the keeper can be operated with hot line tools from either side of the clamp. It also extends beyond the clamp body to allow for the attachment of stringing devices.

The K-CLAMP™ provides substantial labour cost savings in stringing, sagging and conductor clamping. There are other savings that can be achieved in shipping, stocking and maintenance.



Configuration & Hardware Accessories

The 69 kV line post is available in three other configurations: vertical, horizontal, or tie-top (ANSI F-Neck). Also, the horizontal line post can be supplied with a gain base (See below). Conductor clamps are also available.

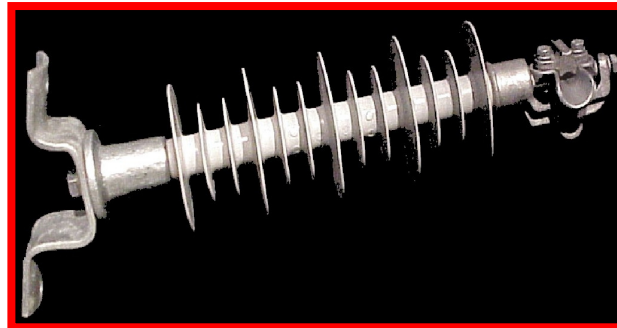
Vertical



Tie-Top



Horizontal with Gain Base



Technical Data

SPECIFICATION	UNIT	CATALOGUE NUMBER*	SPECIFICATION	UNIT	CATALOGUE NUMBER*	
		KL69S			KL69S	
Voltage Class	kV	69	Radio Influence Voltage (RIV) at 1 MHz	Test	kV	45
				Max	µV	6
CSA Class	-	LP69M	Specified Tensile Load (STL)	kN (lb)	22 (5000)	
ANSI Class	-	51-16 & 51-26	Specified Cantilever Load (SCL)	kN (lb)	11 (2475)	
Dry Arcing Distance	mm (in)	551 (21.7)	Max. Design Cantilever Load (MDCL)	kN (lb)	5.5 (1240)	
Leakage Distance	mm (in)	1511 (59.5)	Approx. Weight	kg (lb)	8.0 (17.5)	
Critical Impulse Flashover (Positive)	kV	360	Standard Packaging	-	2	
Low-Frequency Flashover	Dry	kV	235			
	Wet	kV	190**			

* Ordering Information

To Line Post Catalogue Number, add suffix **KP1** for K-CLAMP™, **HP1** for horizontal, **VP1** for vertical, or **TFP1** for tie-top. The standard base thread is 7/8"-9 UNC. Different base threads are available upon request.

** The value shown is as per CSA and the ANSI value is 165 kV.



K-LINE INSULATORS LIMITED

50 Passmore Avenue, Toronto, Ontario, Canada M1V 4T1

• Tel.: (416) 292-2008 • Fax: (416) 292-2094 • E-Mail: insulators@k-line.net • Web Page: www.k-line.net

March 2016